

Cyclopac is used on thousands of loaders, dozers, compressors, cranes, shovels, power units, skidders, tractors, combines, sweepers and many applications on agricultural, construction, mining, and industrial equipment around the world.

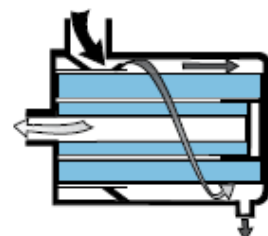
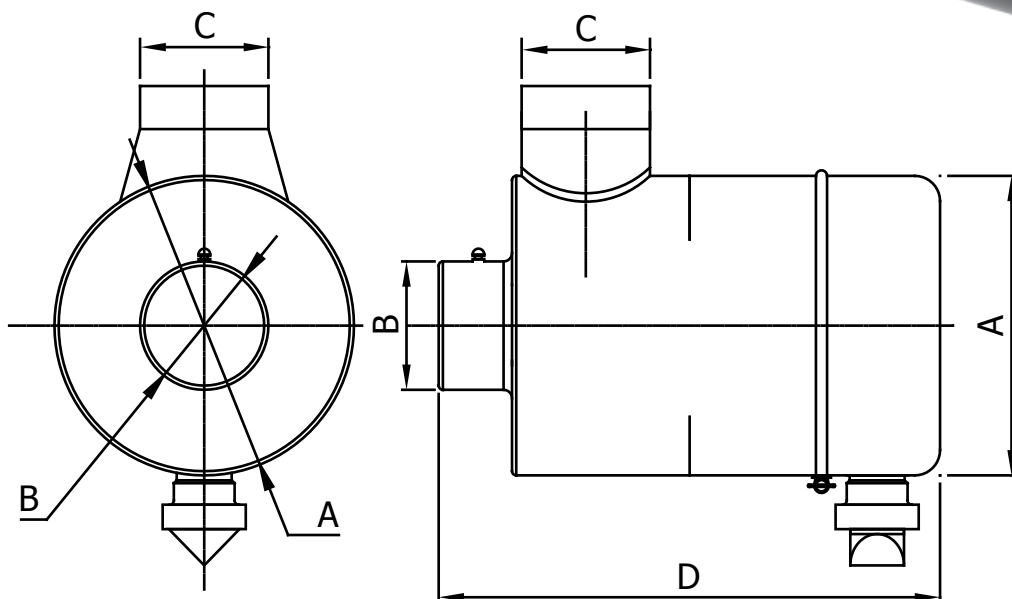
Two Stage Air Cleaners with Safety Element

FHG Model Air Cleaners are versatile units and offer maximum reliability when fitted with safety elements. In case of accidental perforation of the primary element or during removal of the primary element the safety element protects the engine.

While it looks like an axial seal air cleaner on the outside, this new style housing is equipped with a radial seal style primary filter and an optional safety filter. Easy to service, one wing-bolt clamp to undo to access filter(s).



Engine Air Cleaners



FHG MODEL Airflow
Air in the Side, Out the End

Code	Type	CFM OPERATING RANGE INITIAL RESTRICTION			Primary Element	Secondary Element	A Body	B Outlet	C Inlet	D Large	Maximun Flow M ³	Vac Valvue
		6" H2O	8" H2O	10" H2O								
FHG 09-0080	9 Inches Equipament	205	240	270	FR-1461	FR-1462	228,6	63,5	76,2	398,5	6,0	No
FHG 09-0022	9 Inches Equipament	278	328	370	FR-1427	FR-1428	228,6	101,6	114,3	540,0	9,0	No
FHG 09-0069	9 Inches Equipament	250	300	340	FR-1427	FR-1428	228,6	70,0	101,6	490,0	6,2	Yes
FHG 14-0022	14 Inches Equipament	520	605	680	FR-907	FR-908	355,6	152,4	152,4	595,3	20,0	No
FHG 14-0023	14 Inches Equipament	560	670	750	FR-907	NO	355,6	152,4	152,4	595,3	22,0	No
FHG 14-0054	14 Inches Equipament	520	605	680	FR-907	FR-908	355,6	152,4	152,4	595,3	20,0	Yes
FHG 14-0055	14 Inches Equipament	560	670	750	FR-907	NO	355,6	152,4	152,4	595,3	22,0	Yes